



EAST PARK ENERGY

East Park Energy

EN010141

Environmental Statement

Volume 2 – Technical Appendices

Appendix 9-2: Traffic Flow Diagrams

Document Reference: EN010141/DR/6.2

Infrastructure Planning (Applications: Prescribed Forms and
Procedure) Regulations 2009: Regulation 5(2)(a)

May 2026
Version P02

EAST PARK ENERGY

Planning Act 2008

Infrastructure Planning (Applications: Prescribed
Forms and Procedure) Regulations 2009

Environmental Statement Volume 2 – Technical Appendices

Appendix 9-2: Traffic Flow Diagrams

APFP Regulation Reference:	Regulation 5(2)(a)
Planning Inspectorate Scheme Reference:	EN010141
Application Document Number:	EN010141/DR/6.2
Author:	Axis PED Ltd

Version	Date	Status
P01	September 2025	DCO Submission
P02	May 2026	Deadline 3

© AXIS P.E.D. Ltd 2025. All rights reserved.

This document and its accompanying documents contain information which is confidential and is intended only for the use of the client. If you are not one of the intended recipients any disclosure, copying, distribution or action taken in reliance on the contents of the information is strictly prohibited.

Unless expressly agreed, any reproduction of material from this document must be requested and authorised in writing from AXIS P.E.D. Ltd. Authorised reproduction of material must include all copyright and proprietary notices in the same form and manner as the original and must not be modified in any way. Acknowledgement of the source of the material must also be included in all references.

CONTENTS

1.0 Traffic Flows Diagrams	3
Figure 1: Study Area	3
3	
Figure 2: Observed Traffic Flows 2022 (AM Peak Hour (08:00-09:00))	4
Figure 3: Observed Traffic Flows 2022 (PM Peak Hour (17:00-18:00))	5
Figure 4: Observed Traffic Flows 2022 (24 Hour AADT)	6
Figure 5: Observed Traffic Flows 2022 (12 Hour AAWT)	7
Figure 6: Observed Traffic Flows 2024 (AM Peak Hour (08:00-09:00))	8
Figure 7: Observed Traffic Flows 2024 (PM Peak Hour (17:00-18:00))	9
Figure 8: Observed Traffic Flows 2024 (24 Hour AADT)	10
Figure 9: Observed Traffic Flows 2024 (12 Hour AAWT)	11
Figure 10: Factored Baseline Traffic Flows 2028 (AM Peak Hour (08:00-09:00))	
12	
Figure 11: Factored Baseline Traffic Flows 2028 (PM Peak Hour (17:00-18:00))	
13	
Figure 12: Factored Baseline Traffic Flows 2028 (24 Hour AADT)	14
Figure 13: Factored Baseline Traffic Flows 2028 (12 Hour AAWT)	15
Figure 14: Forecast Construction Trips – Average Weekday Flows: Month 2 (Maximum HGVs)	15
Figure 15: Forecast Construction Trips – Average Weekday Flows: Month 12 (Maximum Staff)	17
Figure 16: Forecast Construction Trips – Average Weekday Flows: Whole Construction Period (30 months)	18
Figure 17: 2028 Base + Forecast Construction Trips – 24hr AADT: Month 2 (Maximum HGVs)	19
Figure 18: 2028 Base + Forecast Construction Trips – 12hr AAWT: Month 2 (Maximum HGVs)	20
Figure 19: 2028 Base + Forecast Construction Trips – 24hr AADT: Month 12 (Maximum Staff)	21

Figure 20: 2028 Base + Forecast Construction Trips – 12hr AAWT: Month 12 (Maximum Staff).....	22
Figure 21: 2028 Base + Forecast Construction Trips – 24hr AADT: Whole Construction Period (30 months)	23
Figure 22: 2028 Base + Forecast Construction Trips – 12hr AAWT: Whole Construction Period (30 months)	24

1.0 TRAFFIC FLOWS DIAGRAMS

Figure 1: Study Area

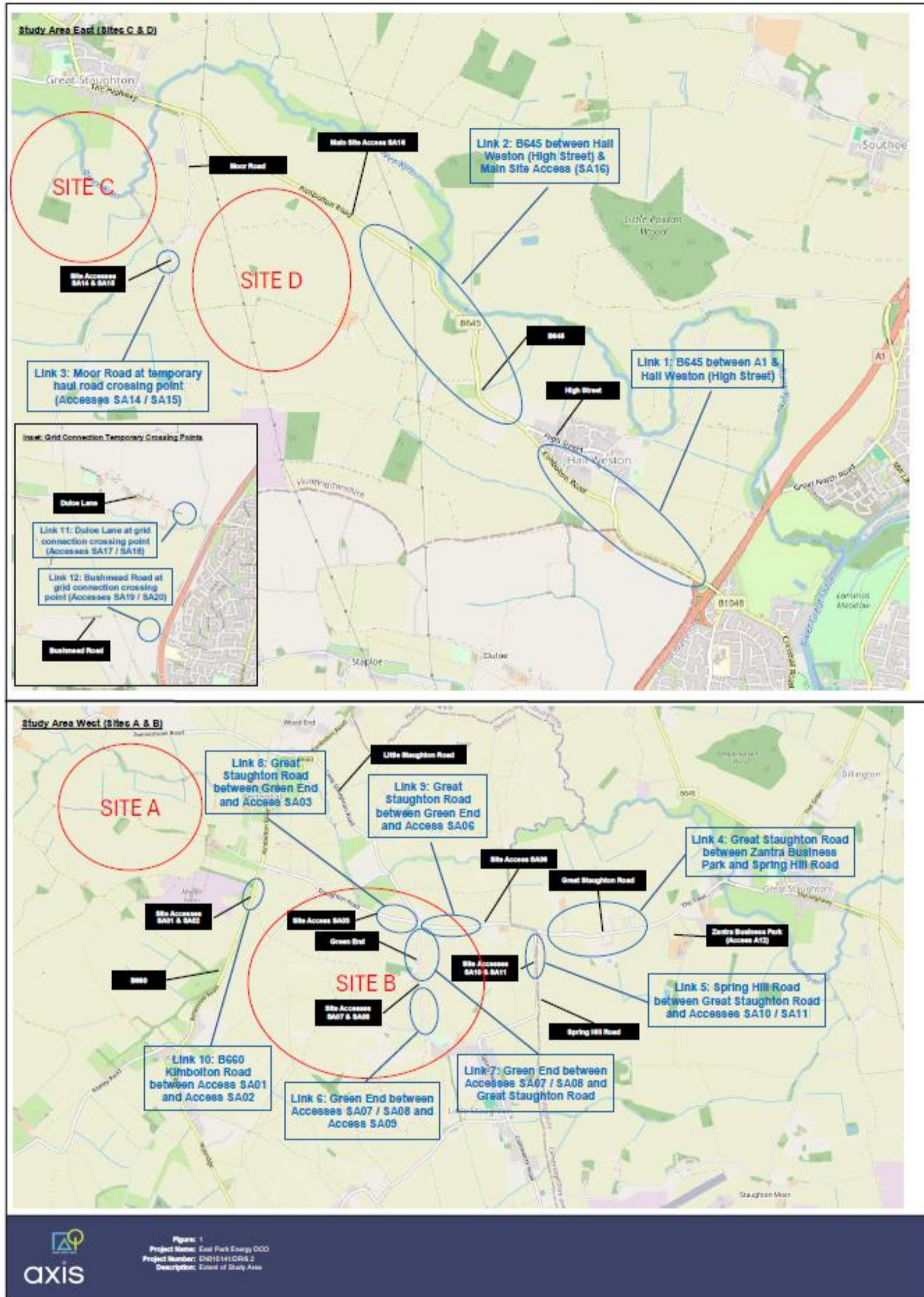


Figure 2: Observed Traffic Flows 2022 (AM Peak Hour (08:00-09:00))

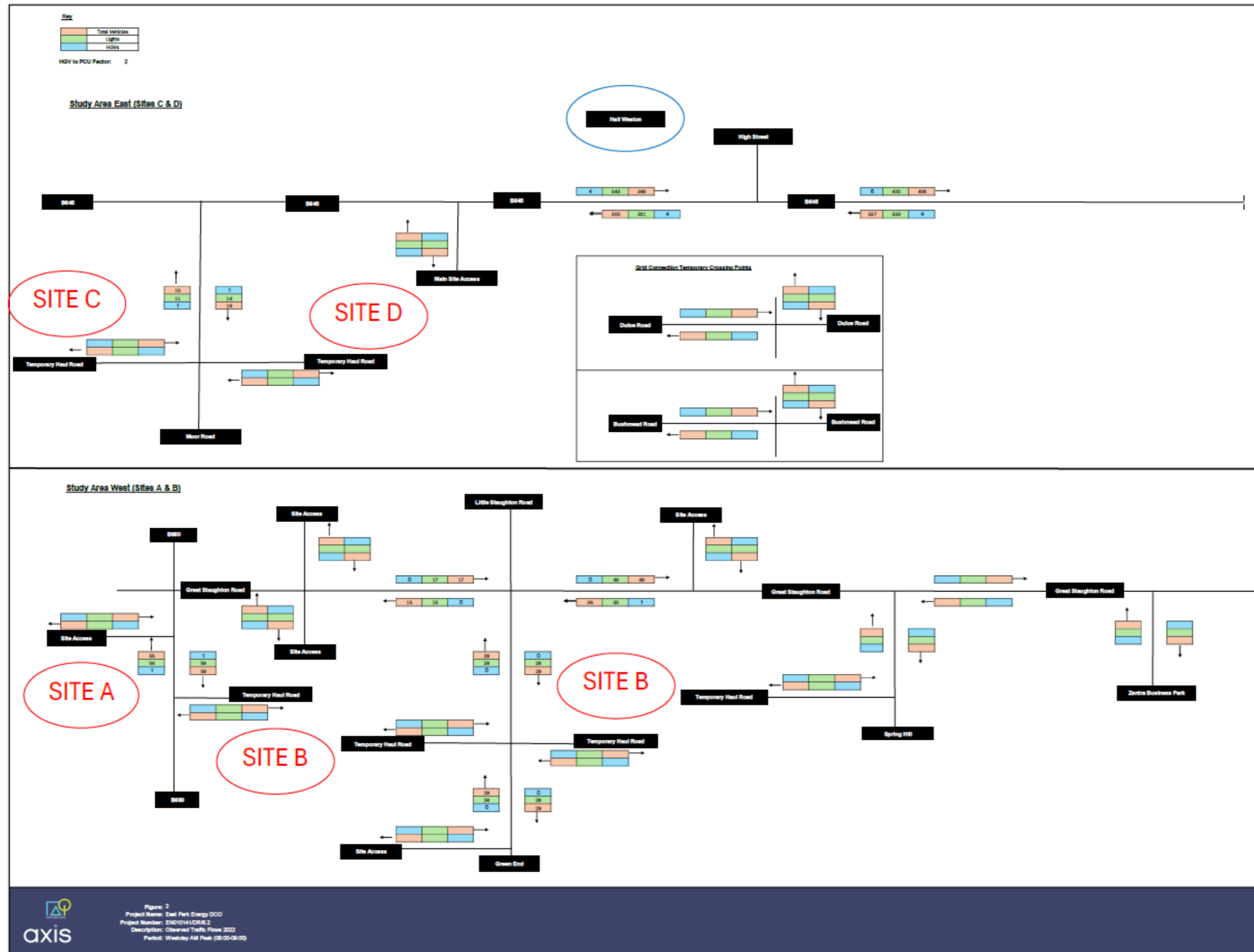


Figure 3: Observed Traffic Flows 2022 (PM Peak Hour (17:00-18:00))

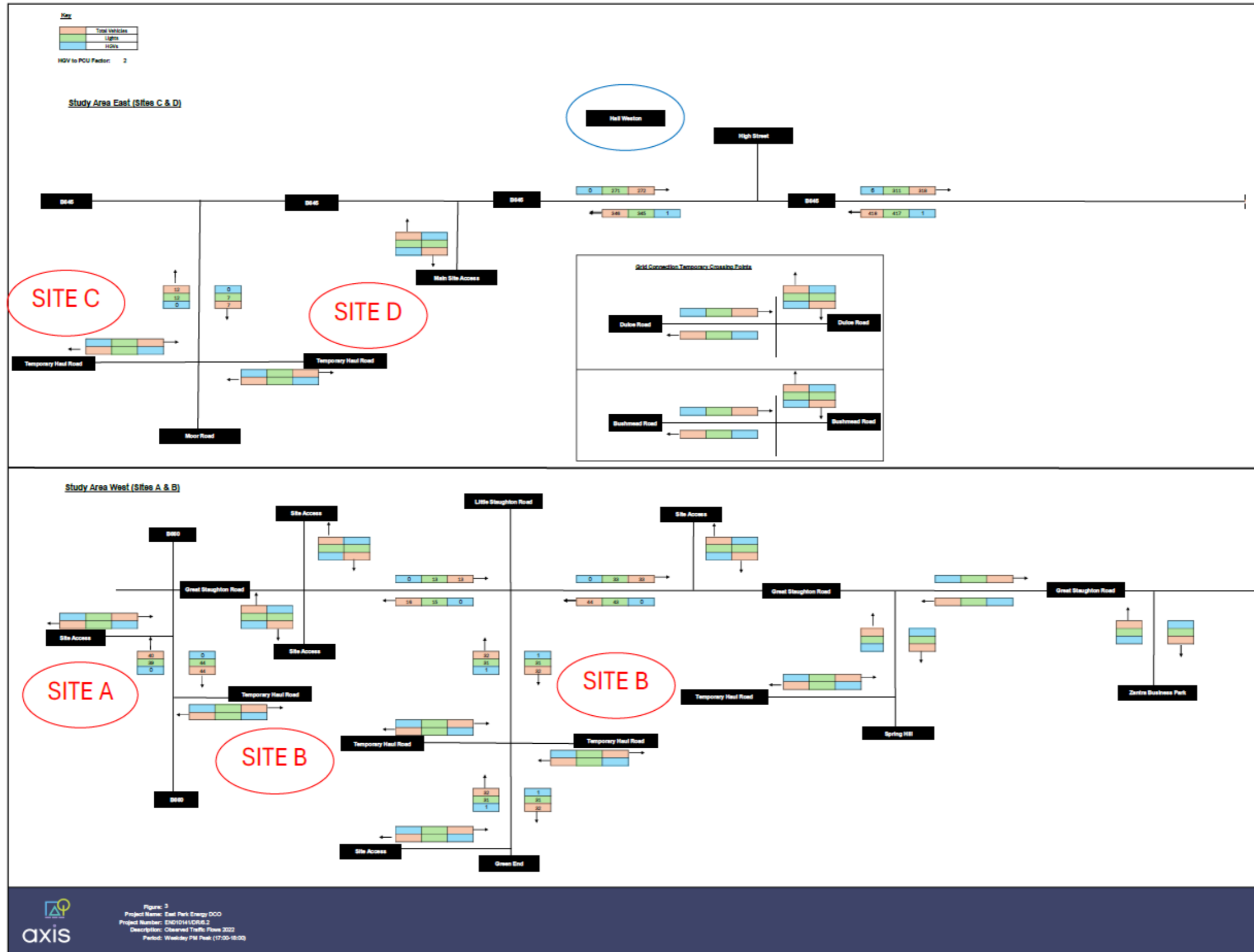


Figure 4: Observed Traffic Flows 2022 (24 Hour AADT)

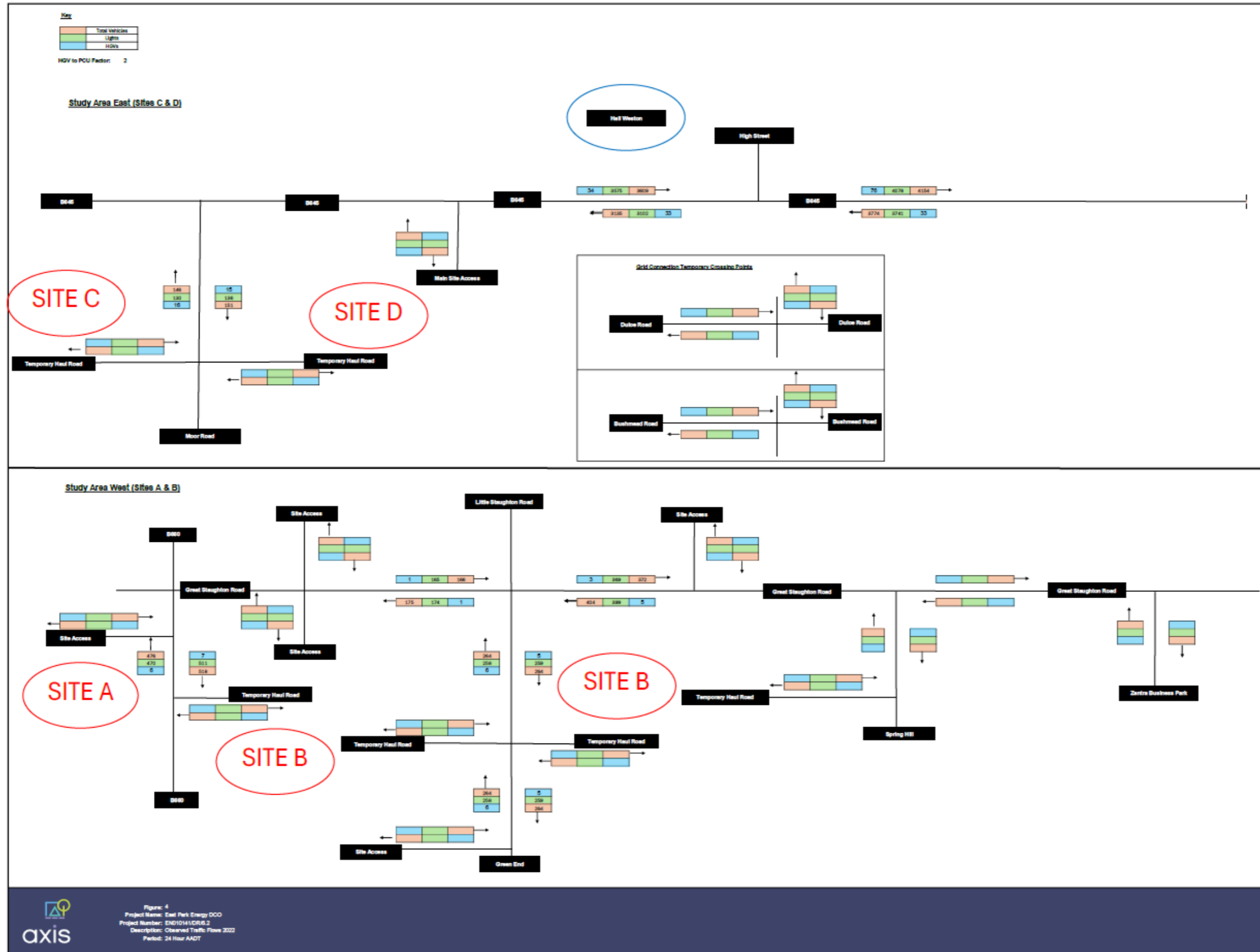


Figure 5: Observed Traffic Flows 2022 (12 Hour AAWT)

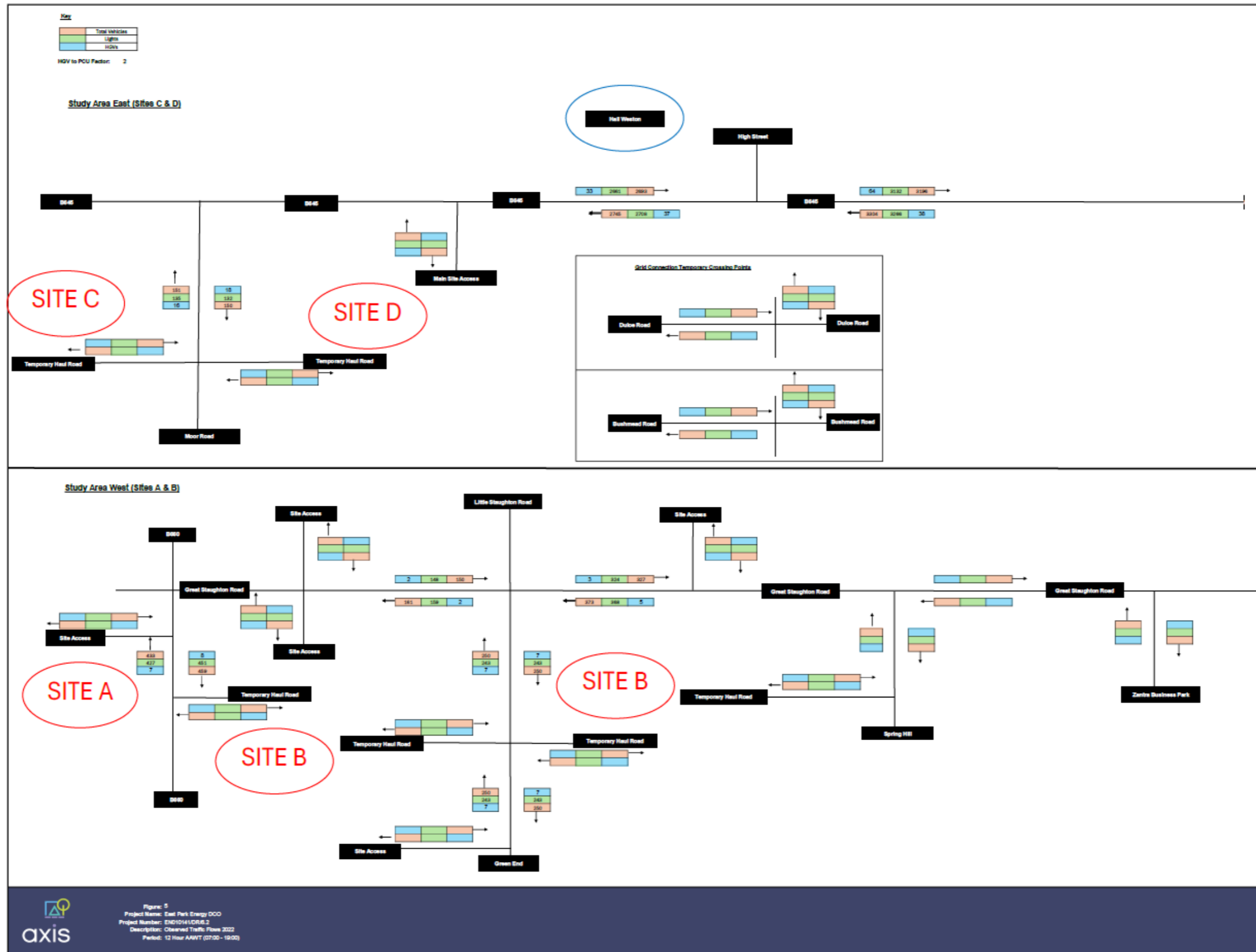


Figure 6: Observed Traffic Flows 2024 (AM Peak Hour (08:00-09:00))

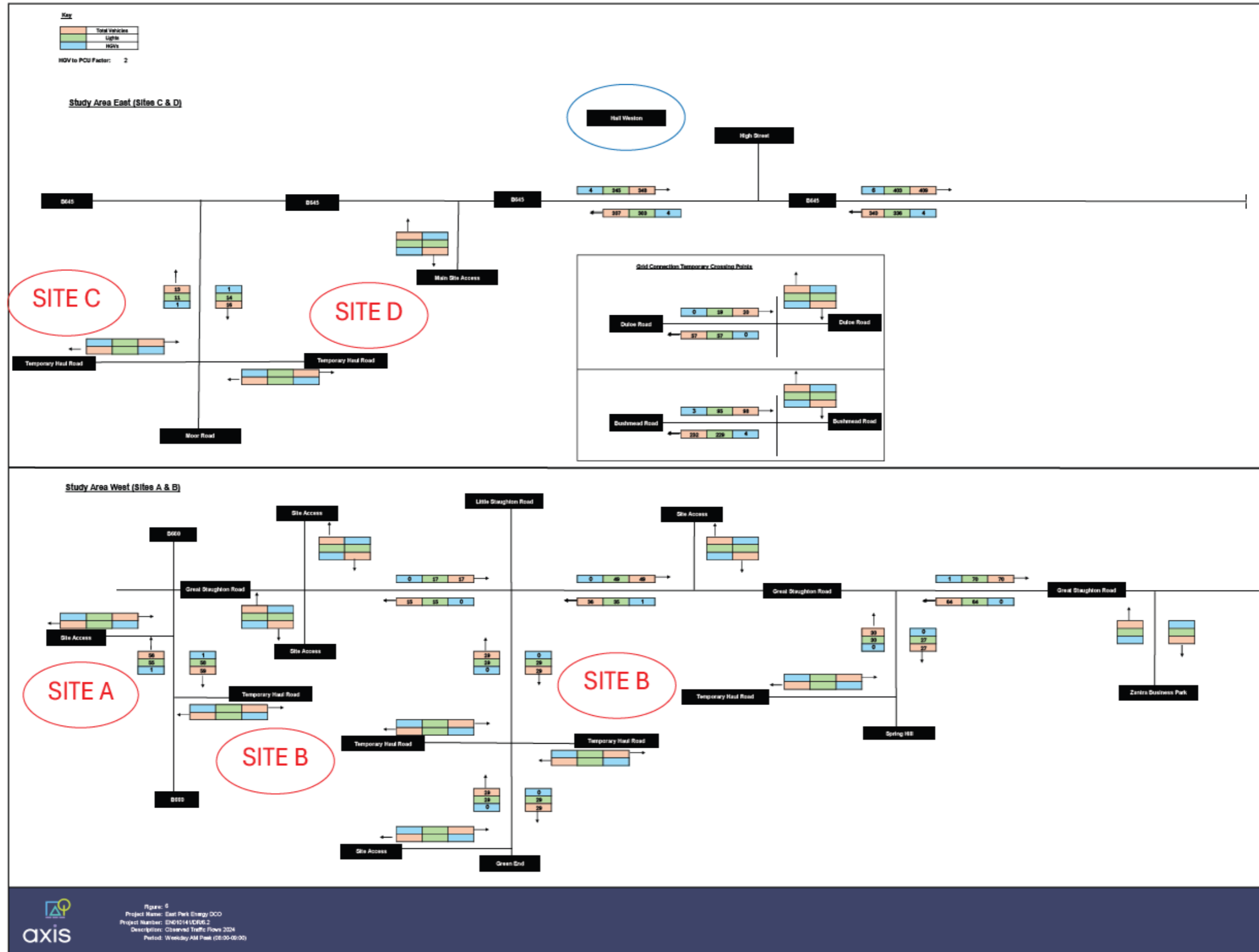


Figure 7: Observed Traffic Flows 2024 (PM Peak Hour (17:00-18:00))

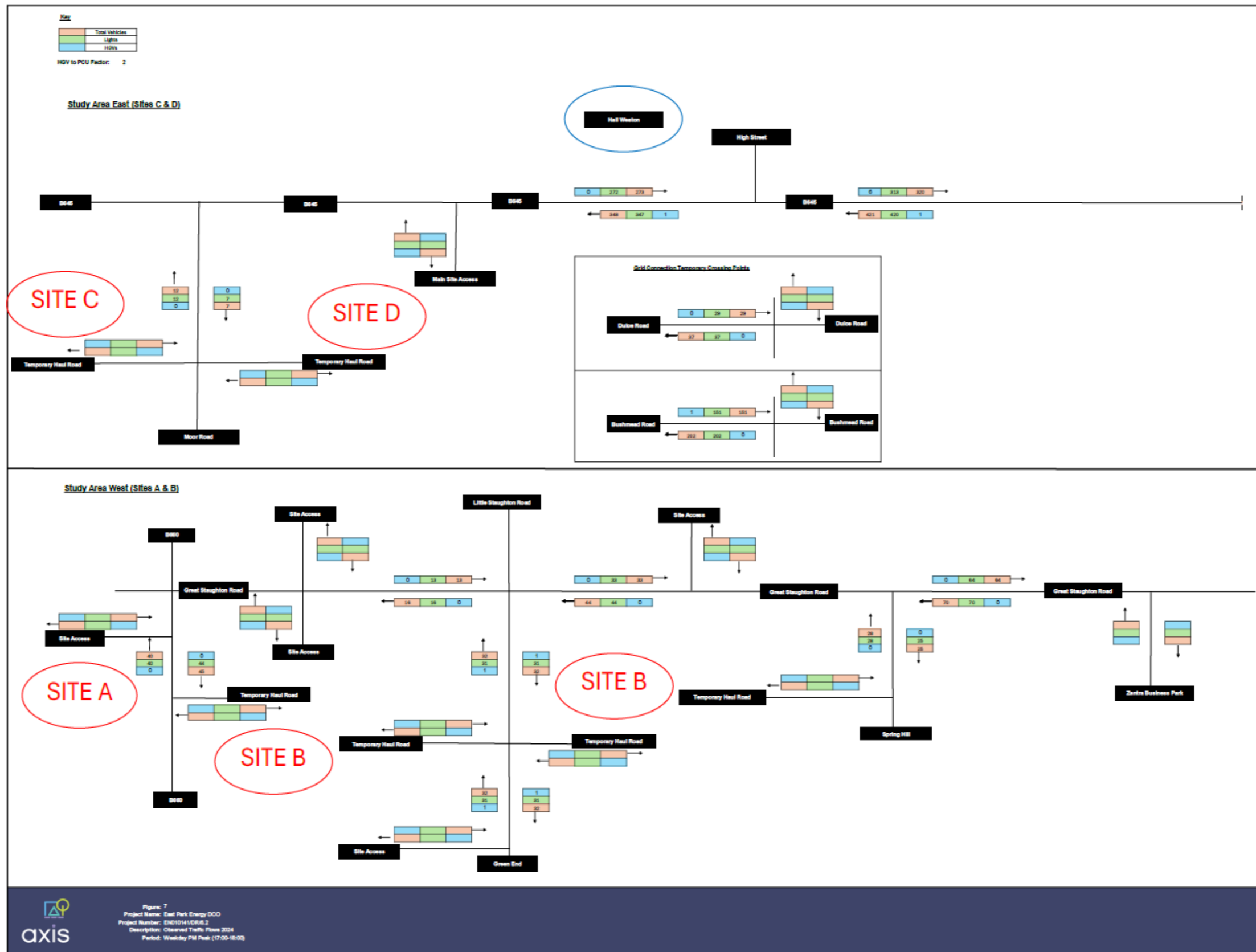


Figure 8: Observed Traffic Flows 2024 (24 Hour AADT)

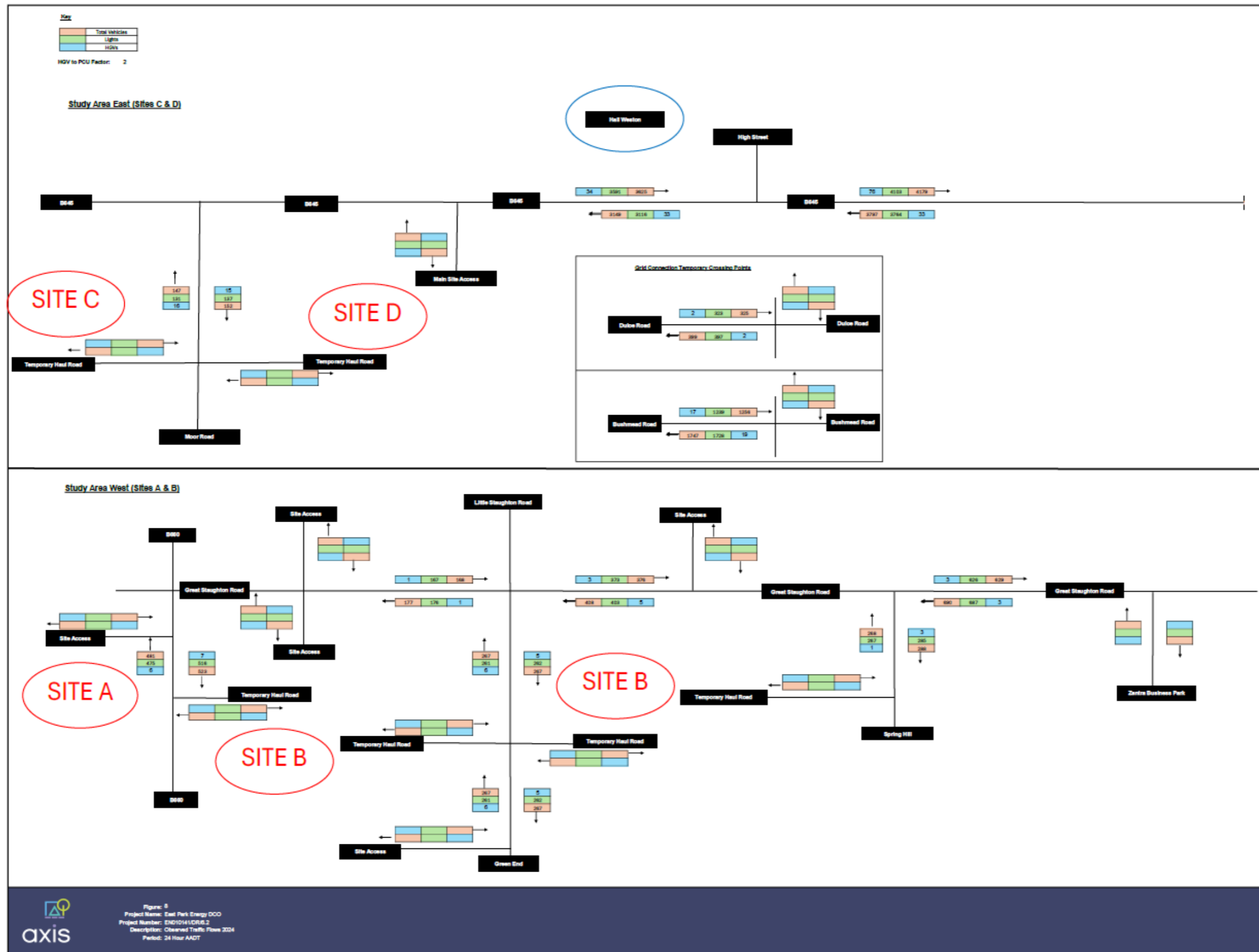


Figure 10: Factored Baseline Traffic Flows 2028 (AM Peak Hour (08:00-09:00))

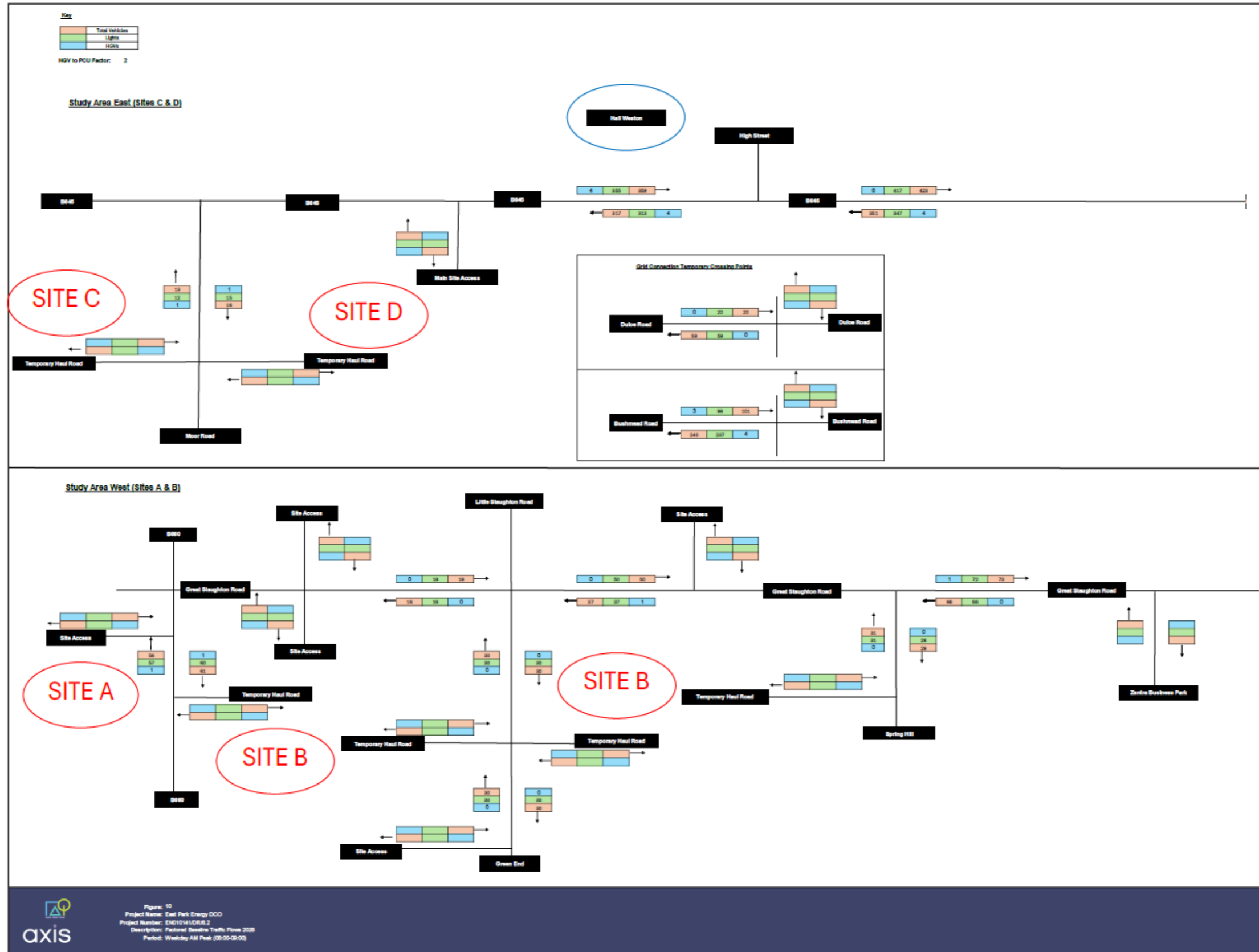


Figure 11: Factored Baseline Traffic Flows 2028 (PM Peak Hour (17:00-18:00))

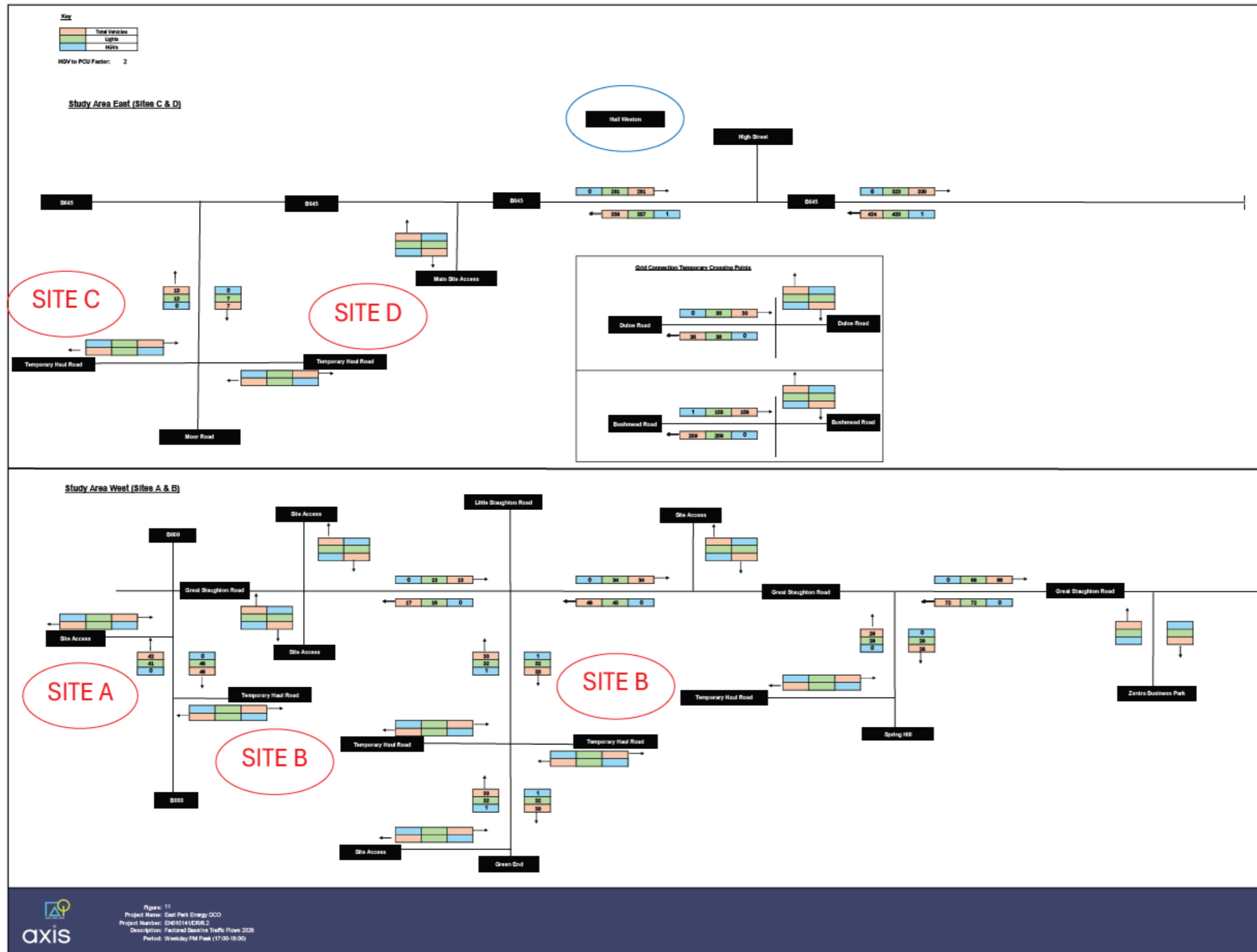


Figure 12: Factored Baseline Traffic Flows 2028 (24 Hour AADT)

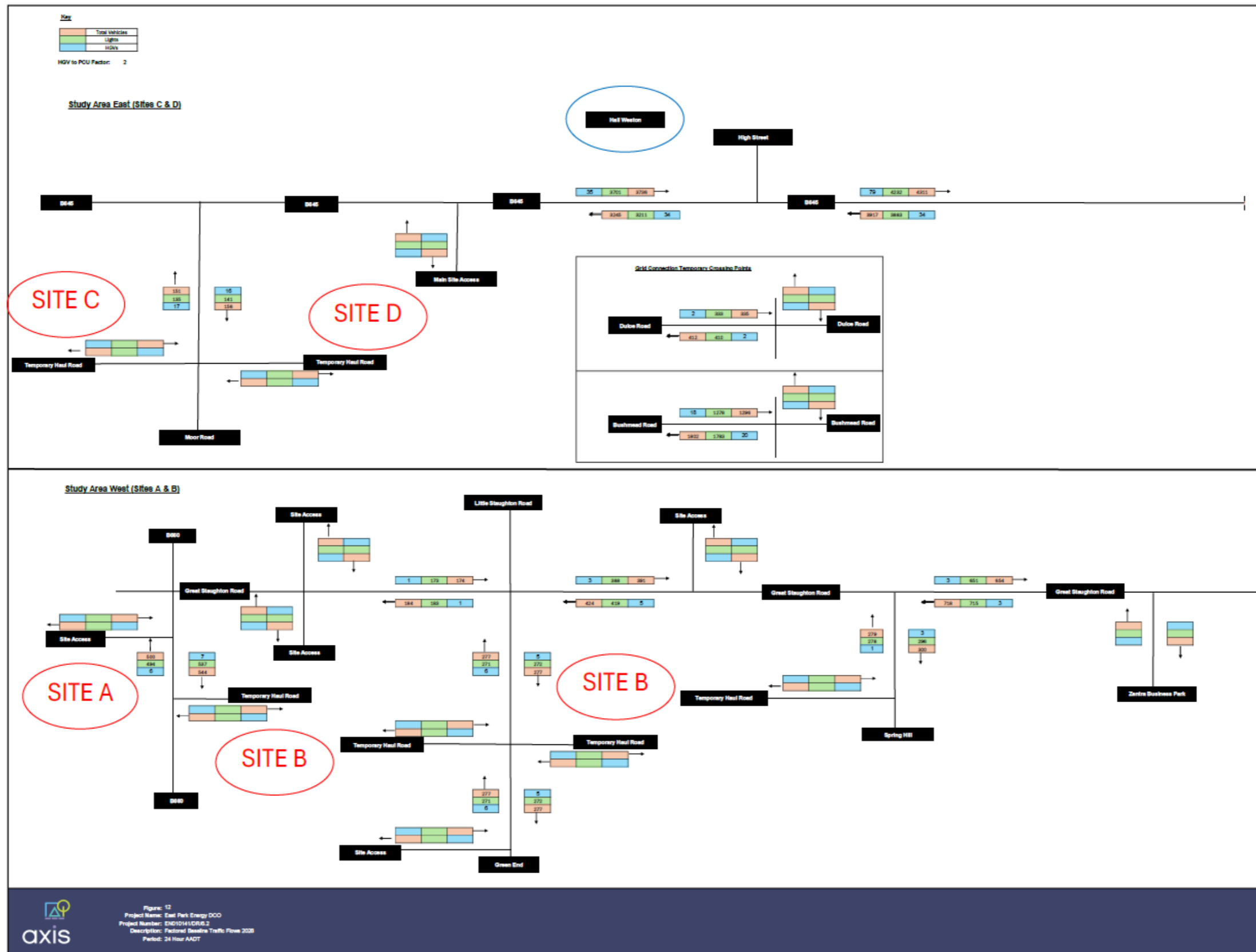


Figure 13: Factored Baseline Traffic Flows 2028 (12 Hour AAWT)

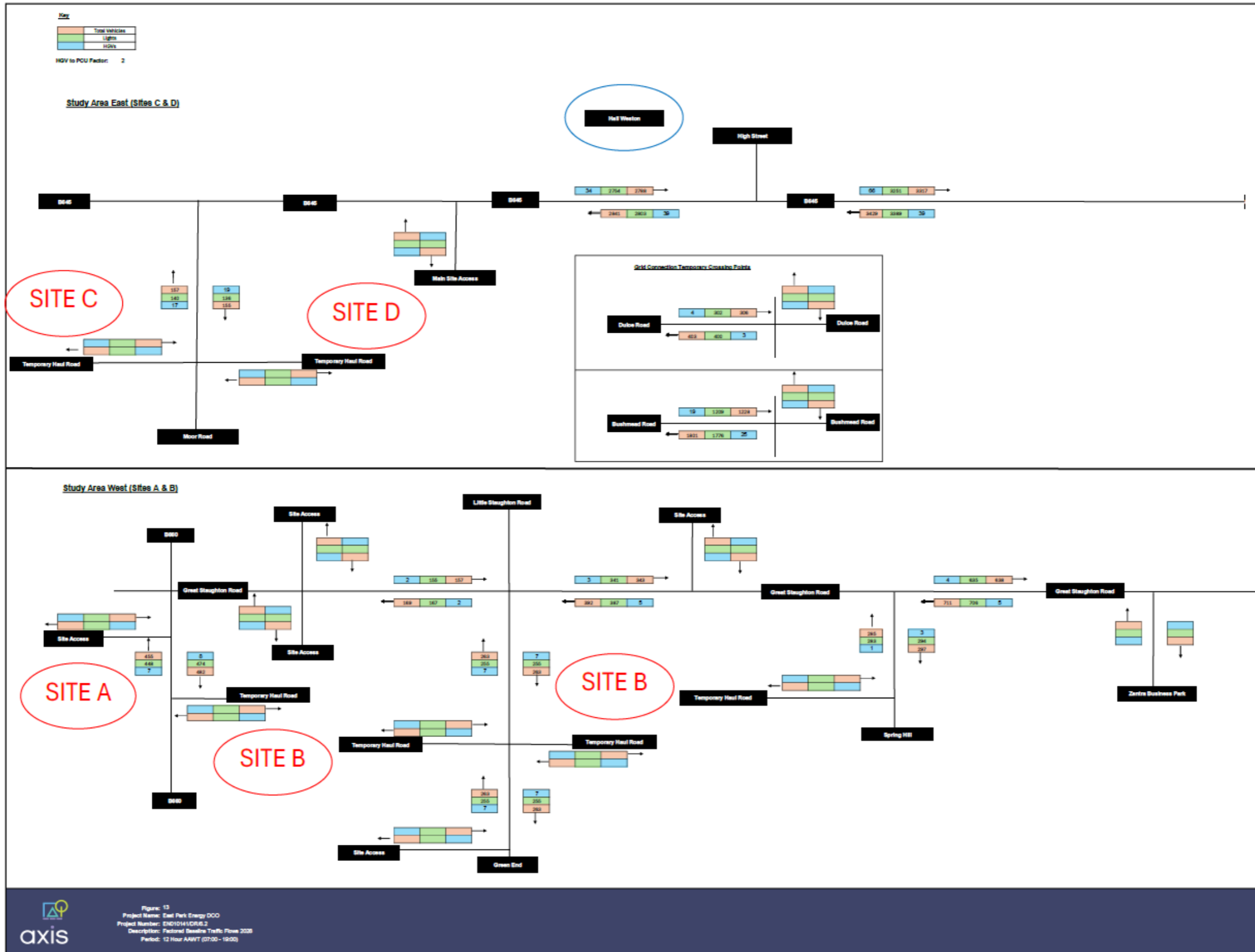


Figure 14: Forecast Construction Trips – Average Weekday Flows: Month 2 (Maximum HGVs)

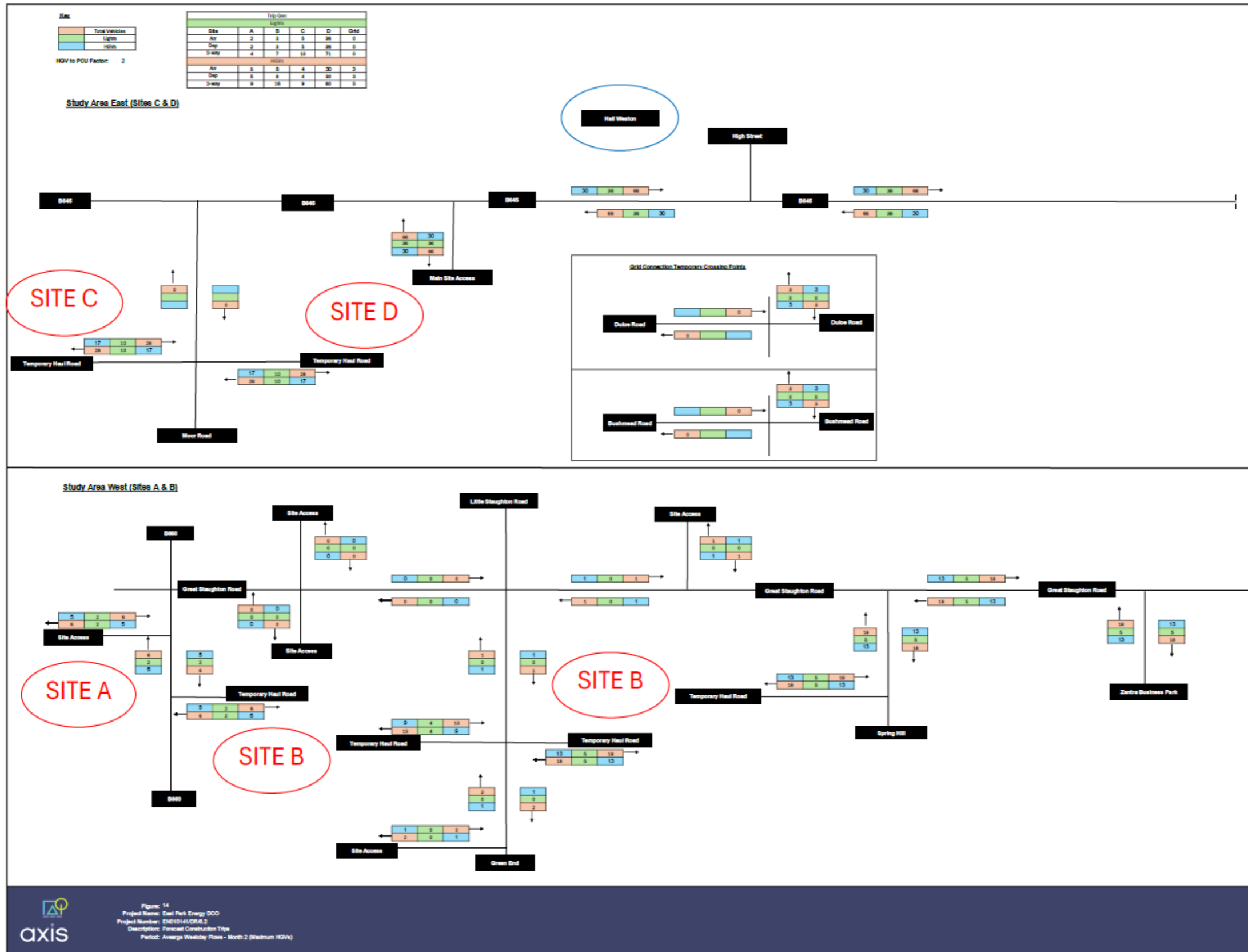


Figure 15: Forecast Construction Trips – Average Weekday Flows: Month 12 (Maximum Staff)

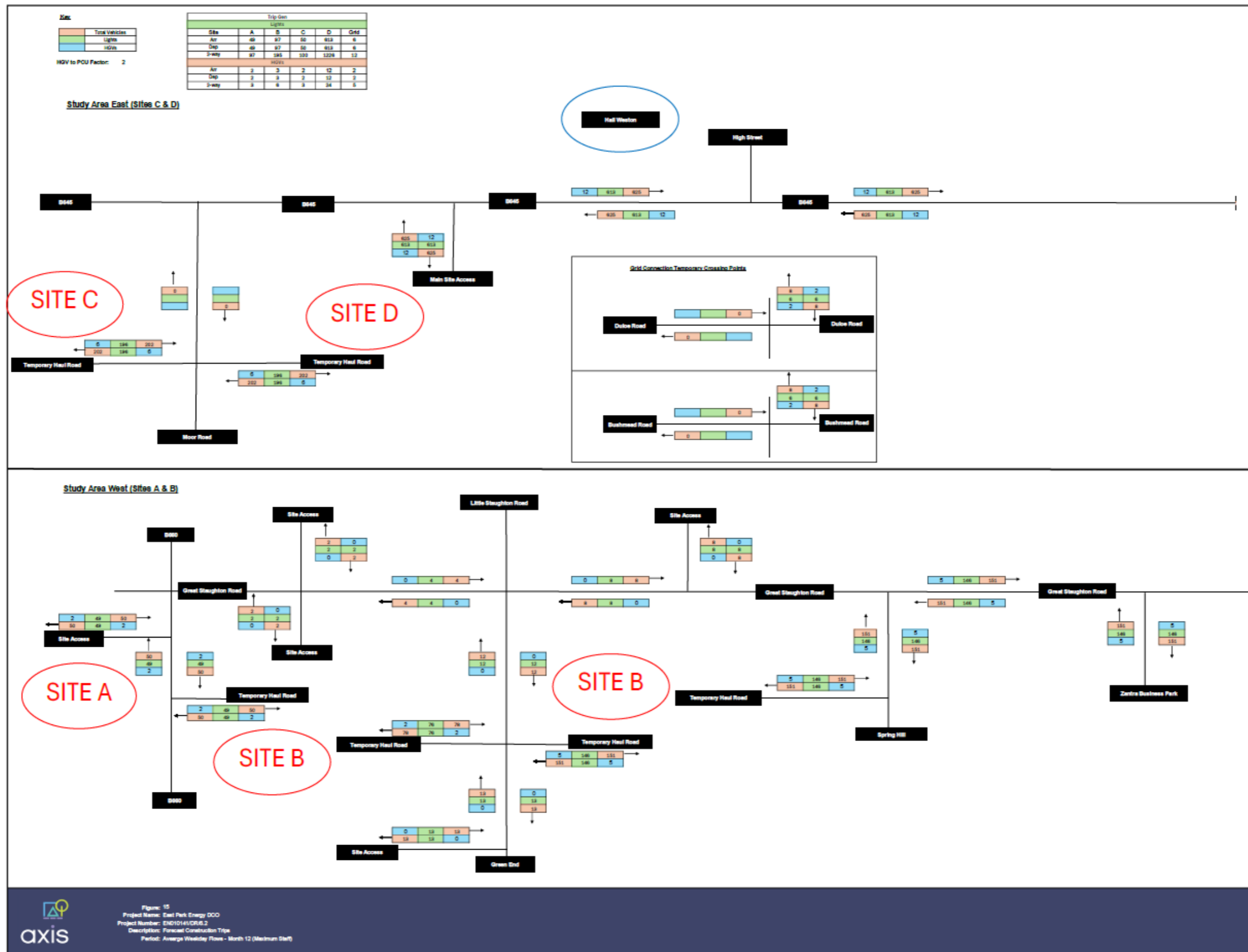


Figure 16: Forecast Construction Trips – Average Weekday Flows: Whole Construction Period (30 months)

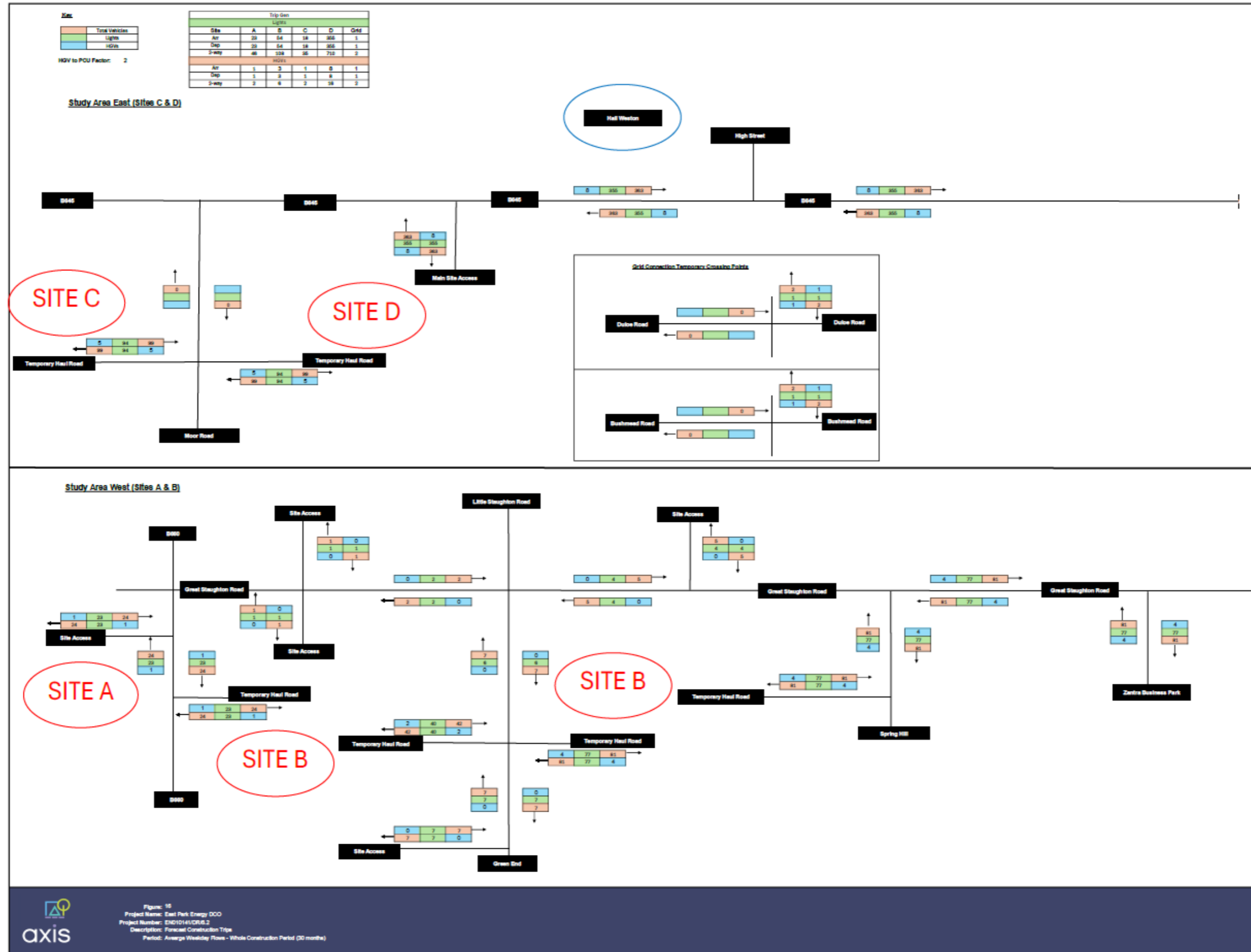


Figure 17: 2028 Base + Forecast Construction Trips – 24hr AADT: Month 2 (Maximum HGVs)

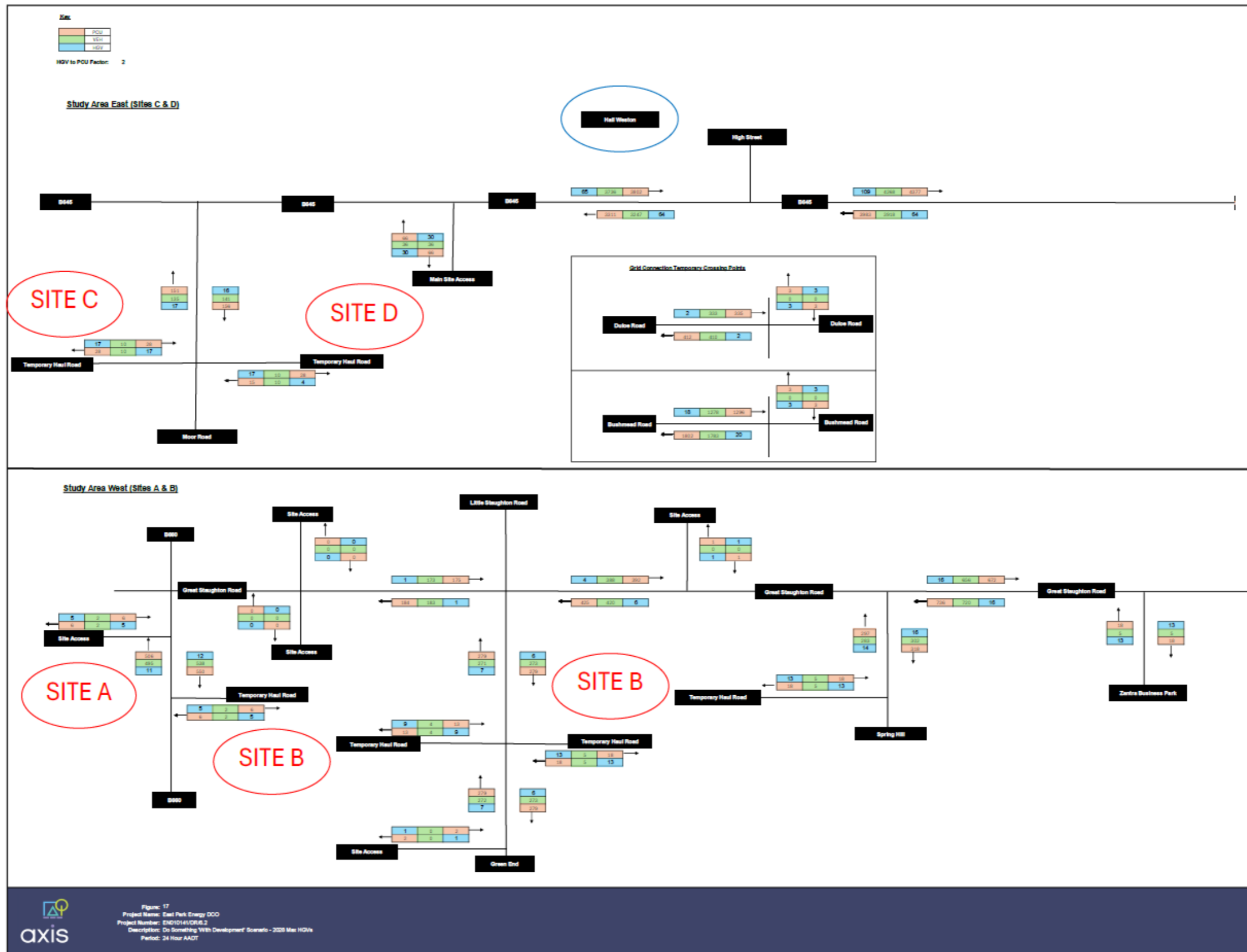


Figure 18: 2028 Base + Forecast Construction Trips – 12hr AAWT: Month 2 (Maximum HGVs)

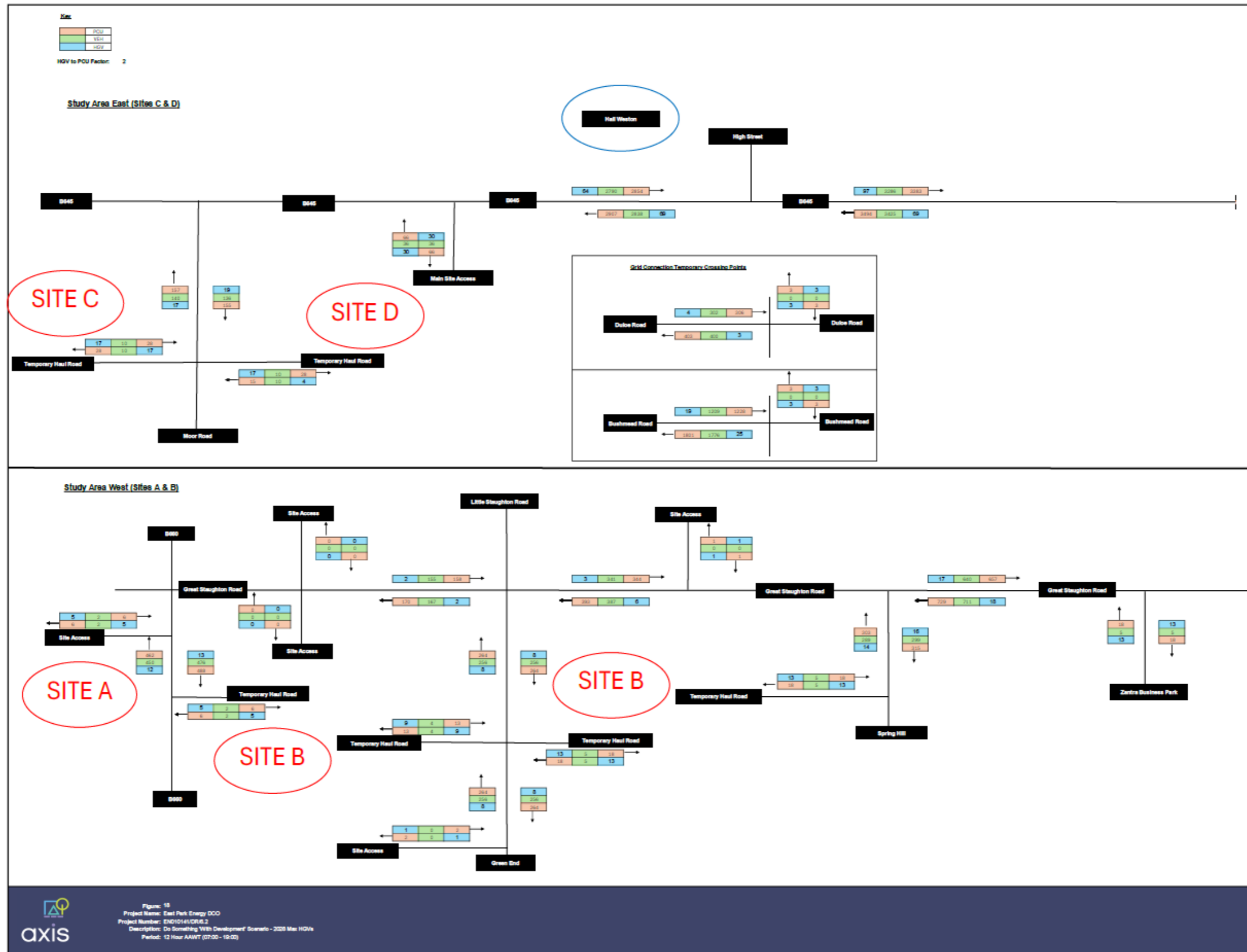


Figure 19: 2028 Base + Forecast Construction Trips – 24hr AADT: Month 12 (Maximum Staff)

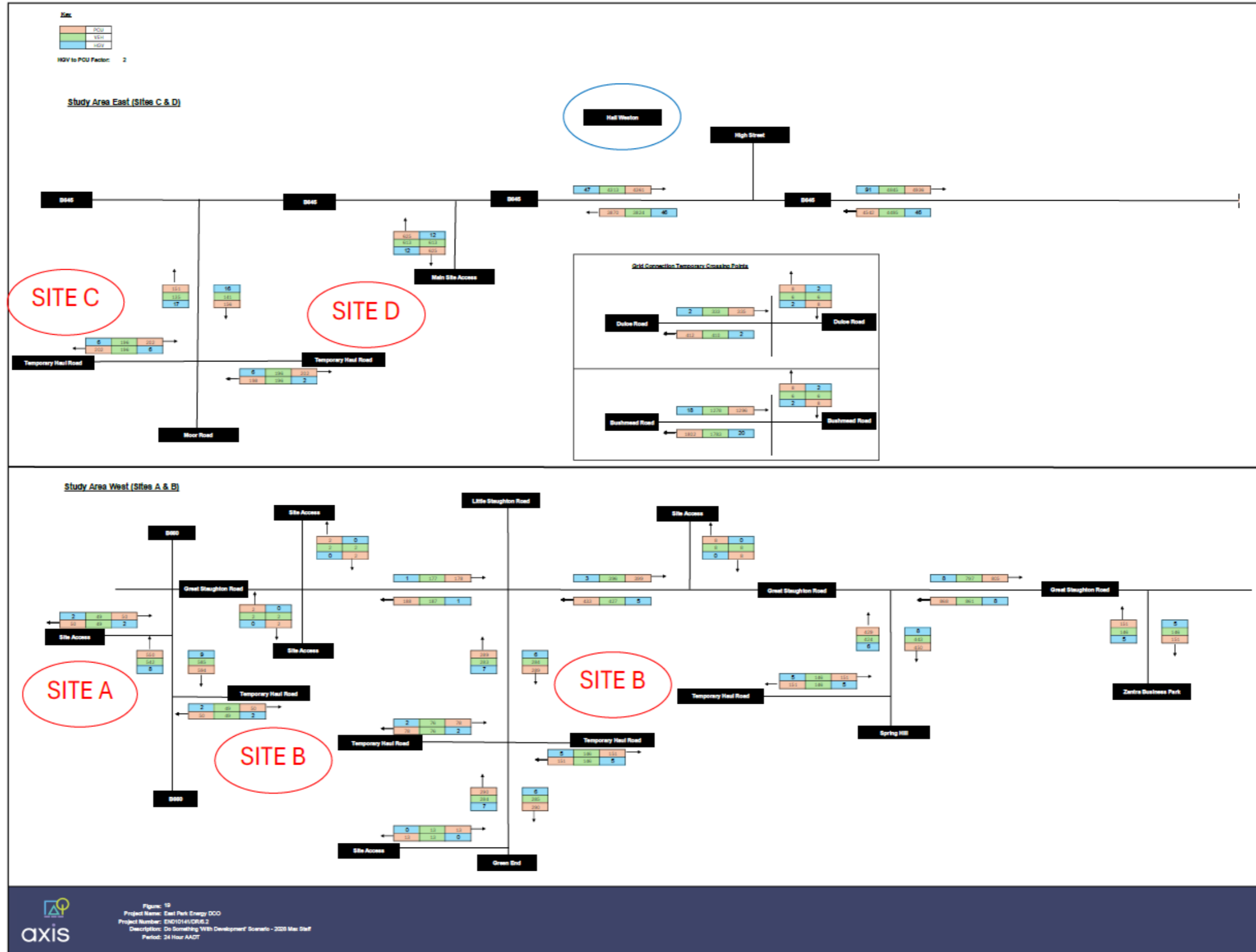


Figure 20: 2028 Base + Forecast Construction Trips – 12hr AAWT: Month 12 (Maximum Staff)

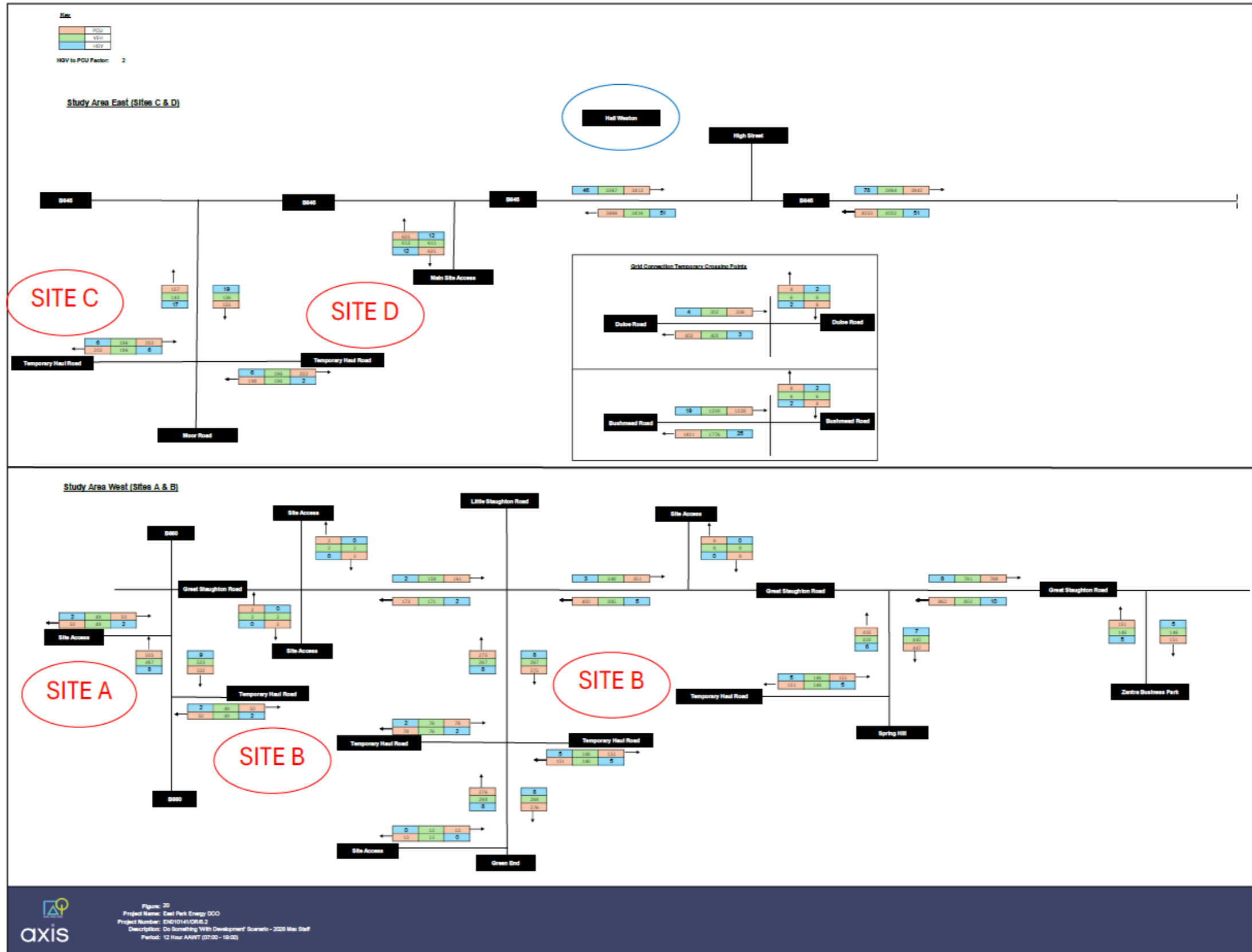


Figure 21: 2028 Base + Forecast Construction Trips – 24hr AADT: Whole Construction Period (30 months)

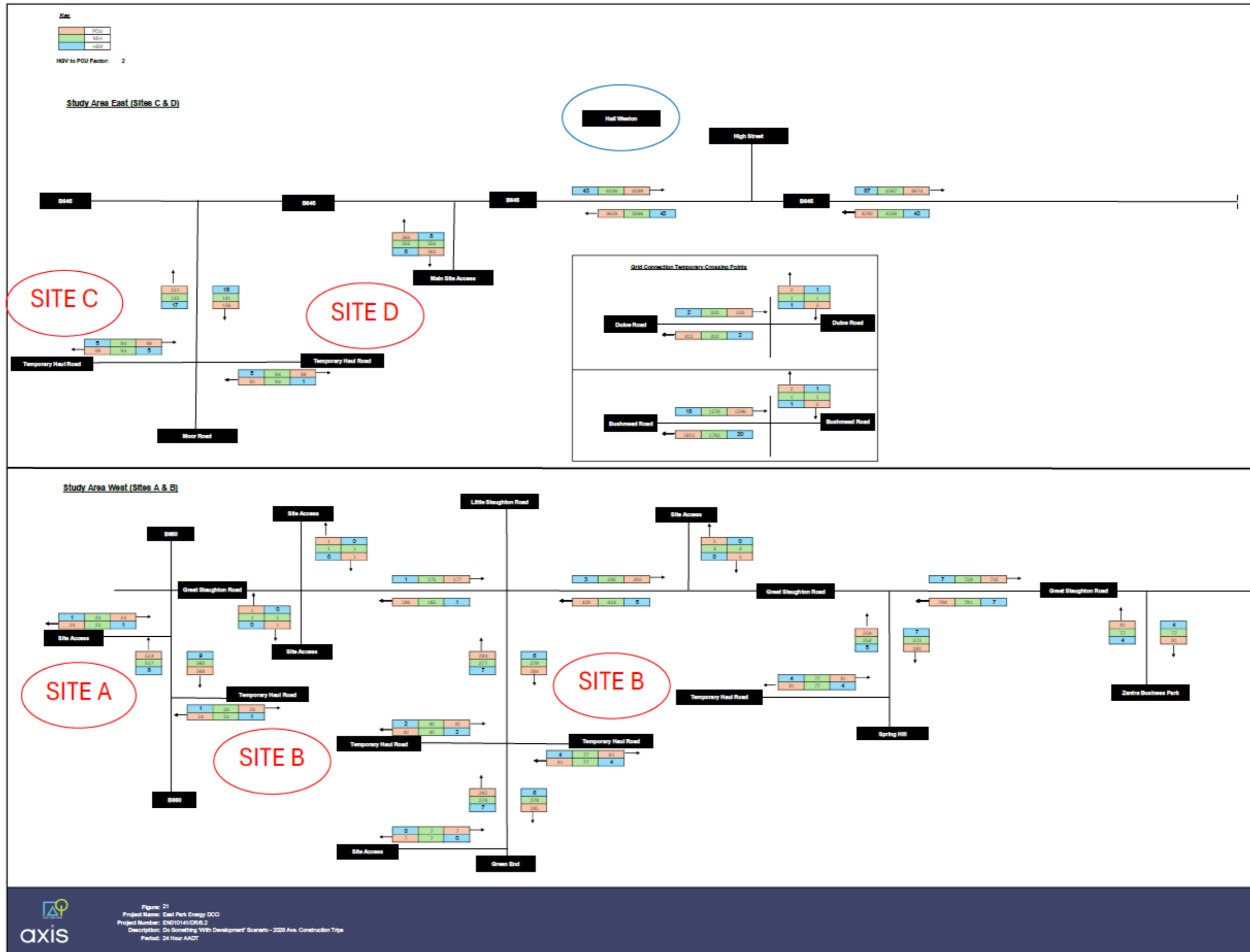


Figure 22: 2028 Base + Forecast Construction Trips – 12hr AAWT: Whole Construction Period (30 months)

